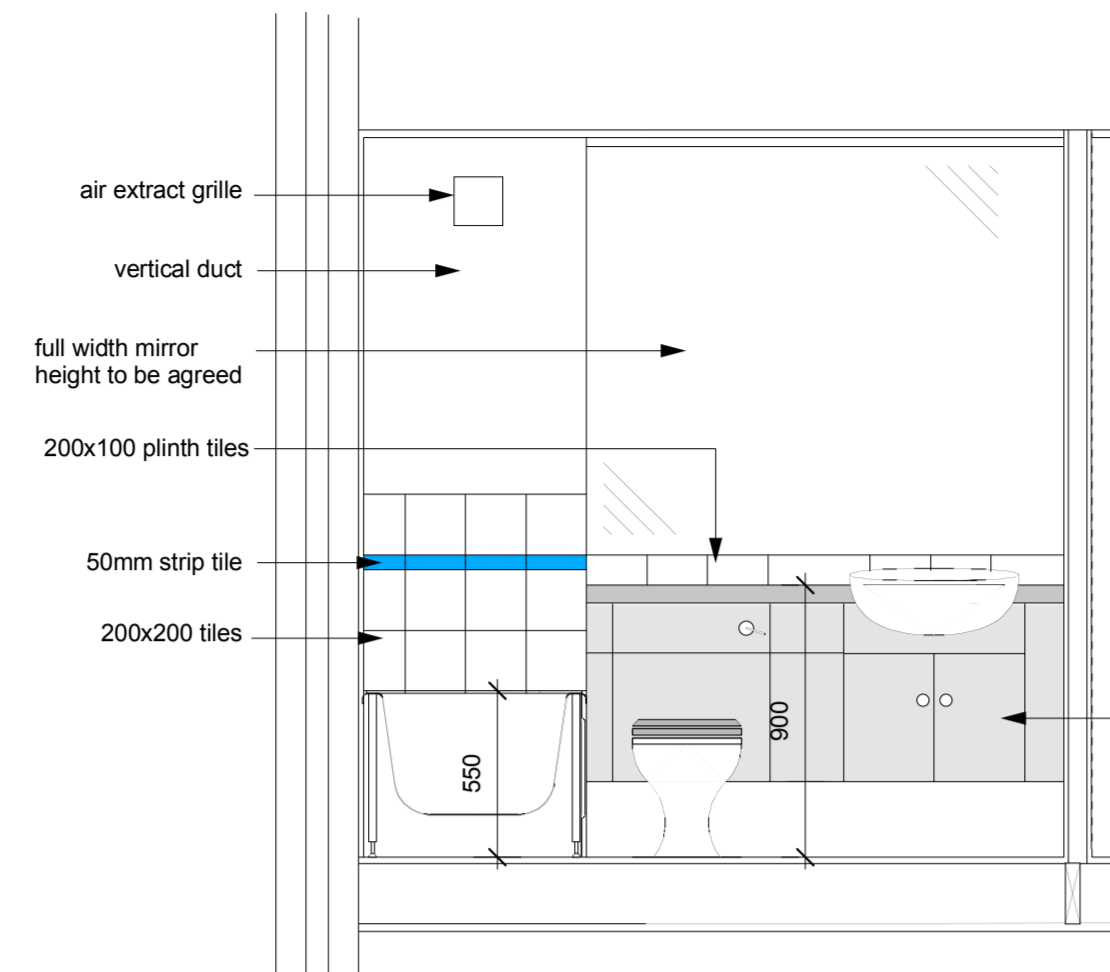
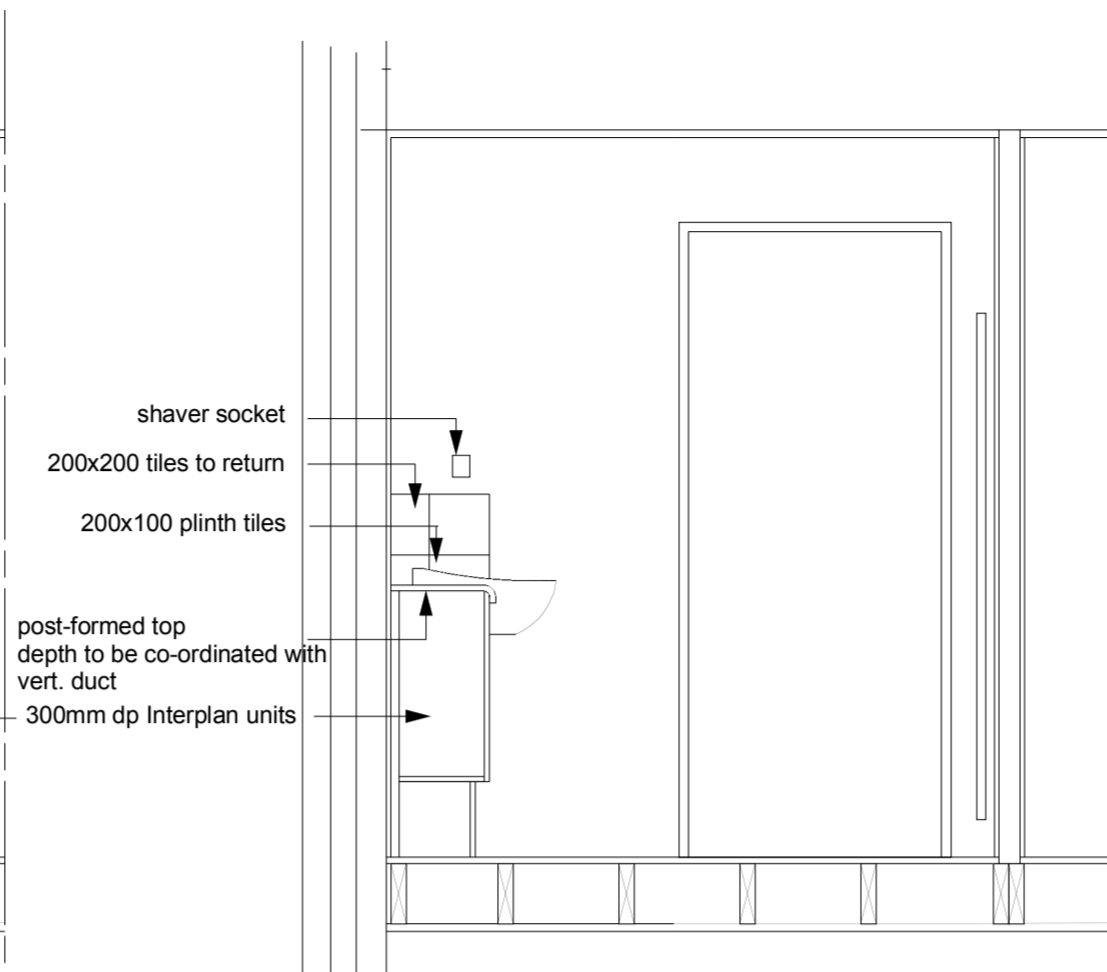


PLAN

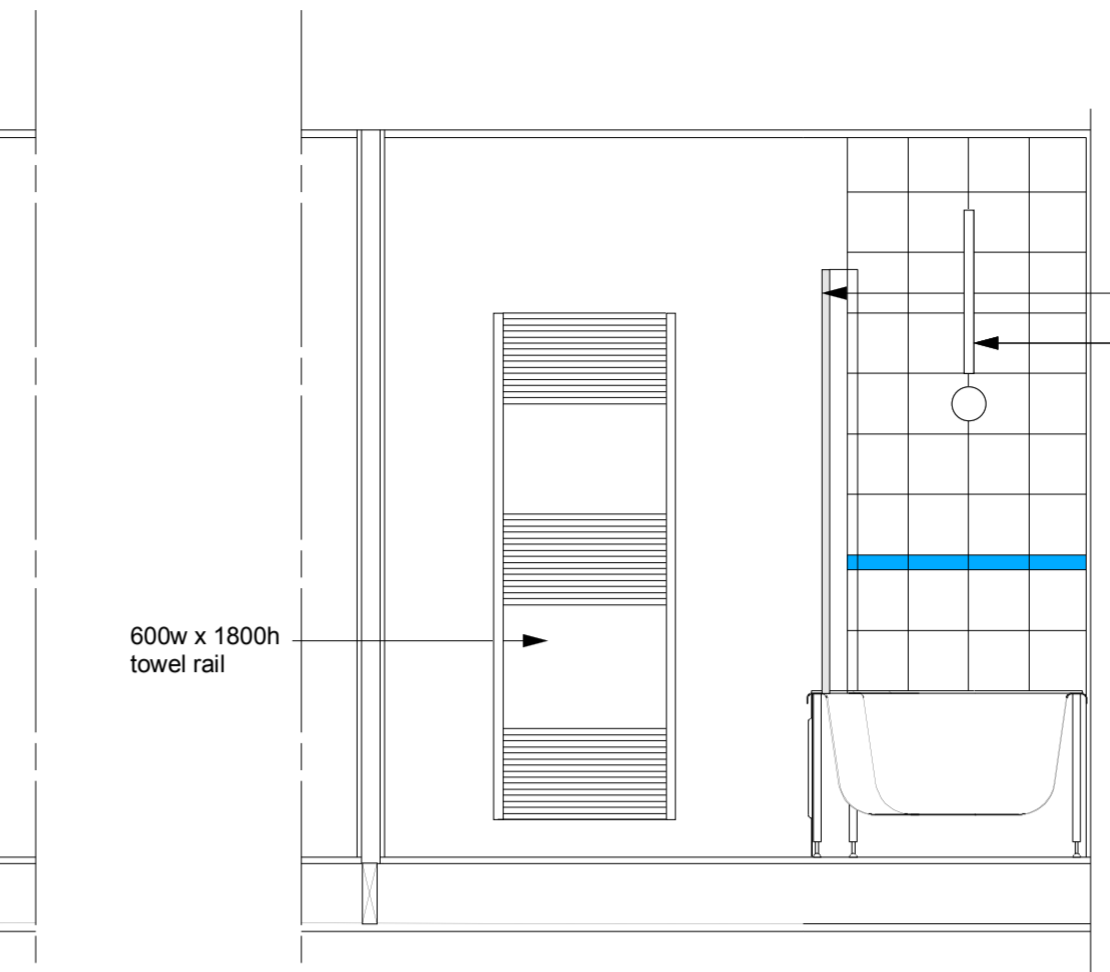
FIRST FLOOR ENSUITE BATHROOM



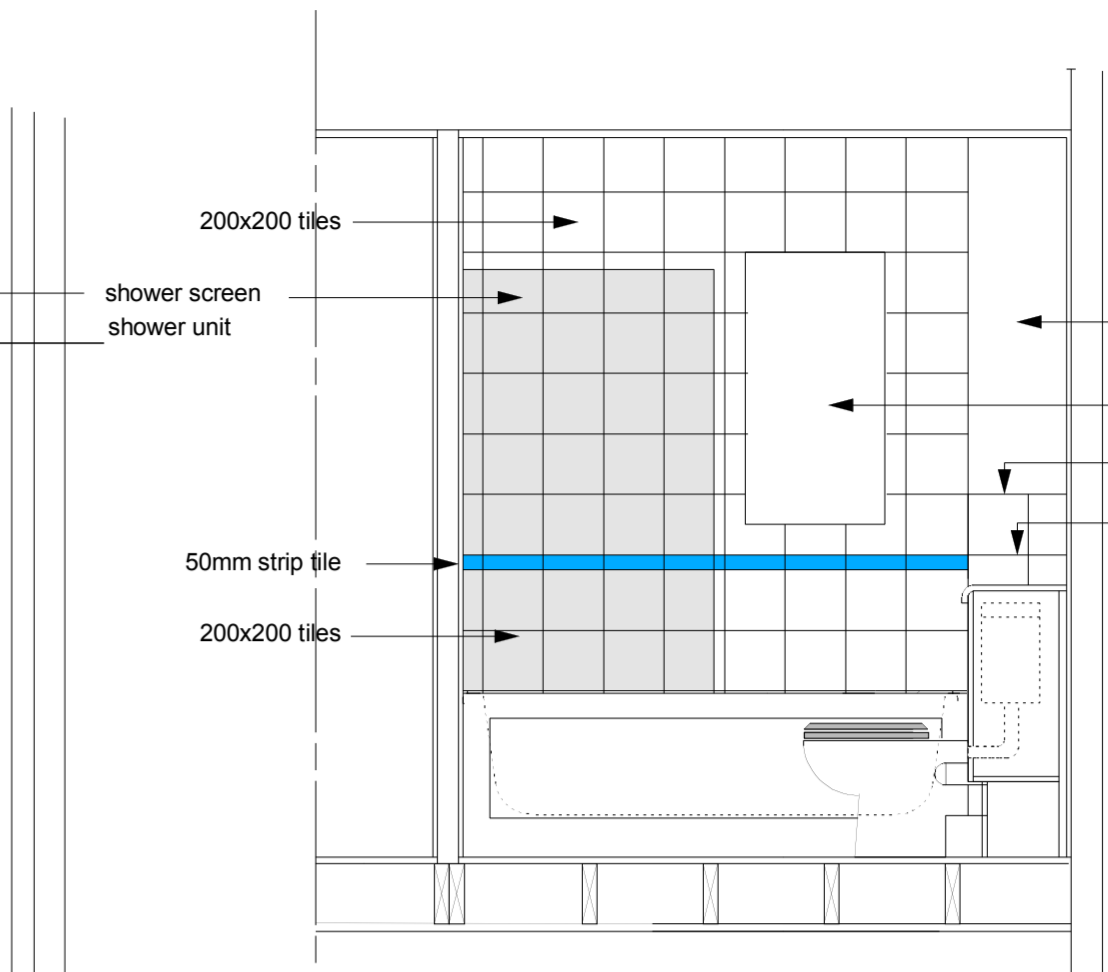
ELEVATION A



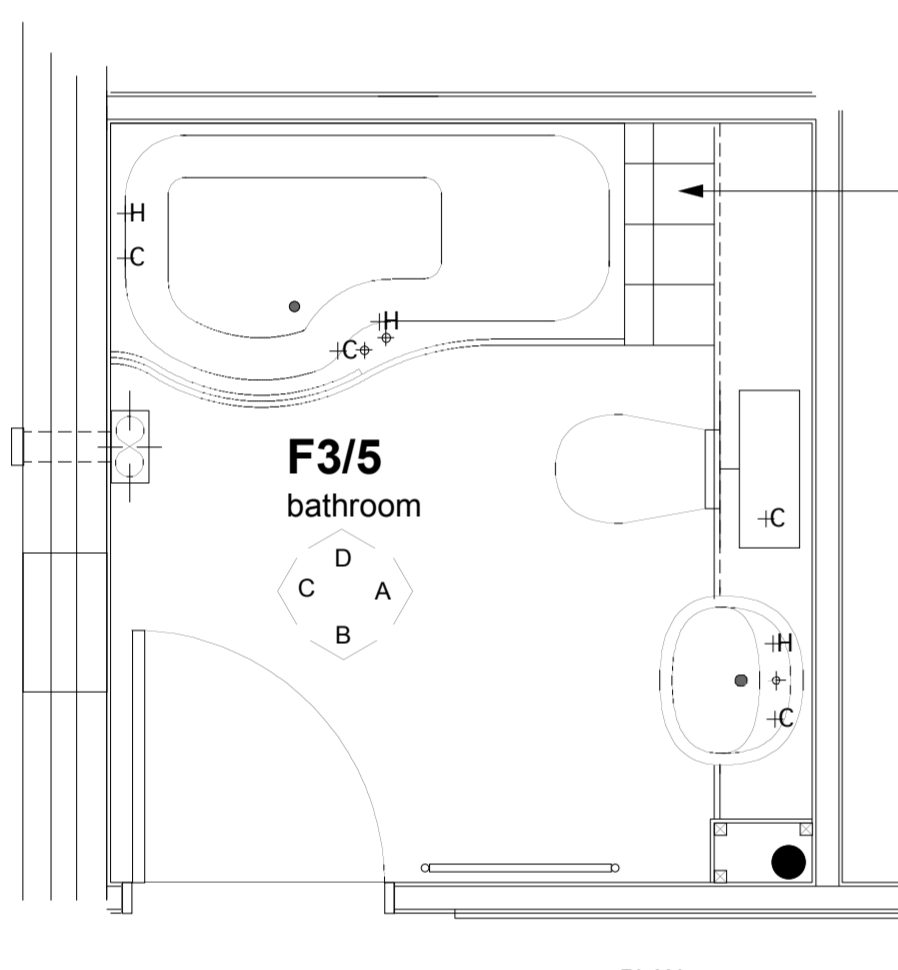
ELEVATION B



ELEVATION C

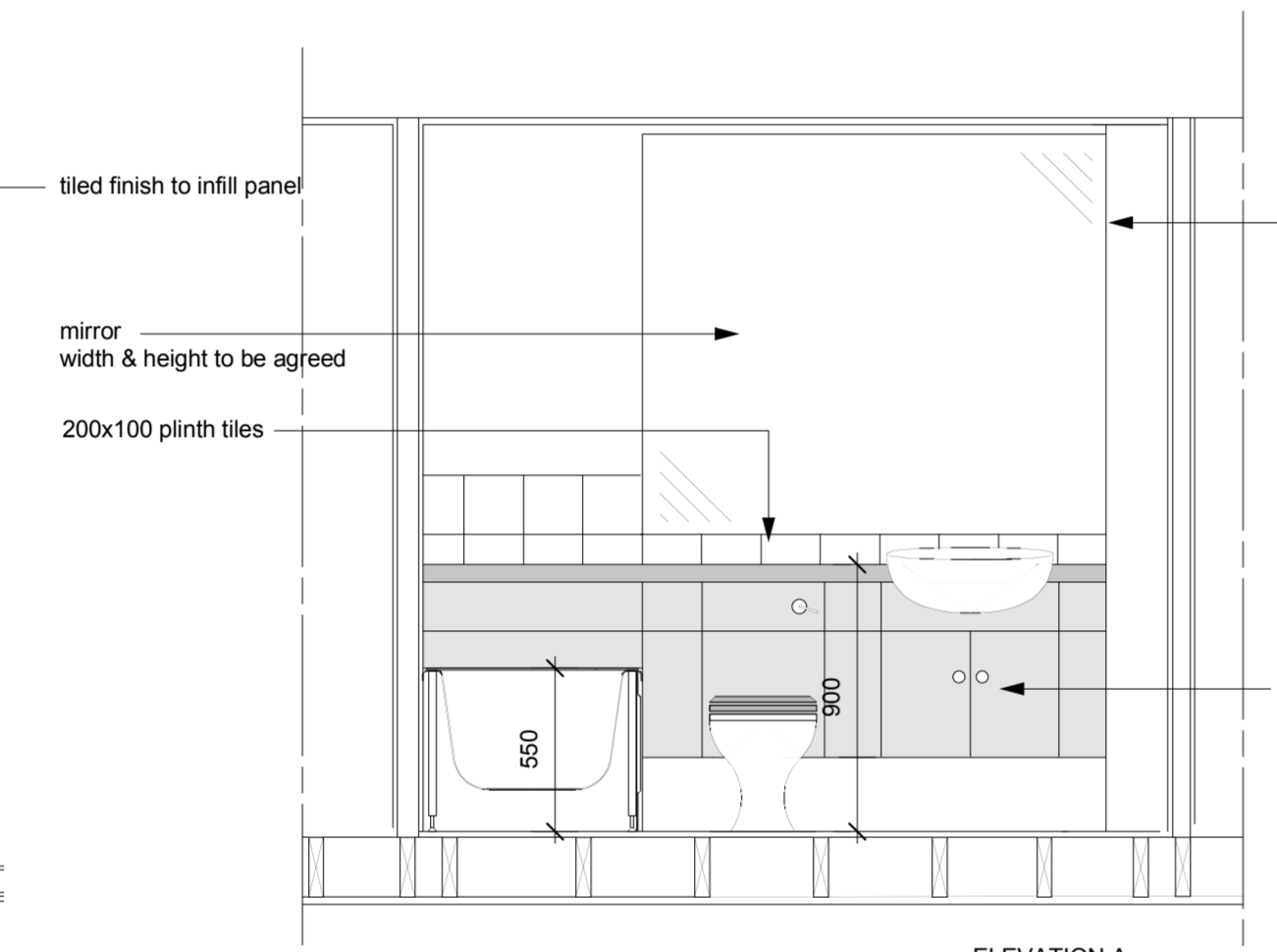


ELEVATION D

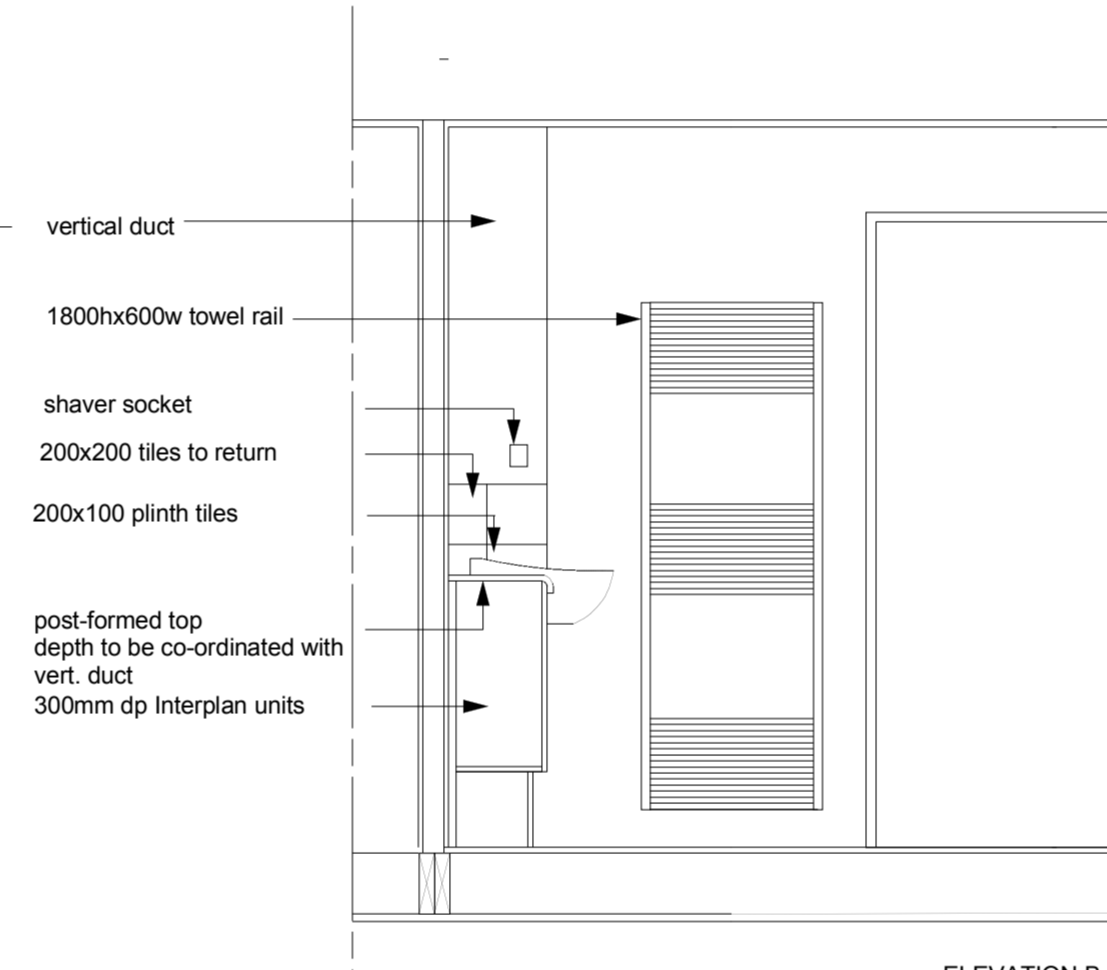


PLAN

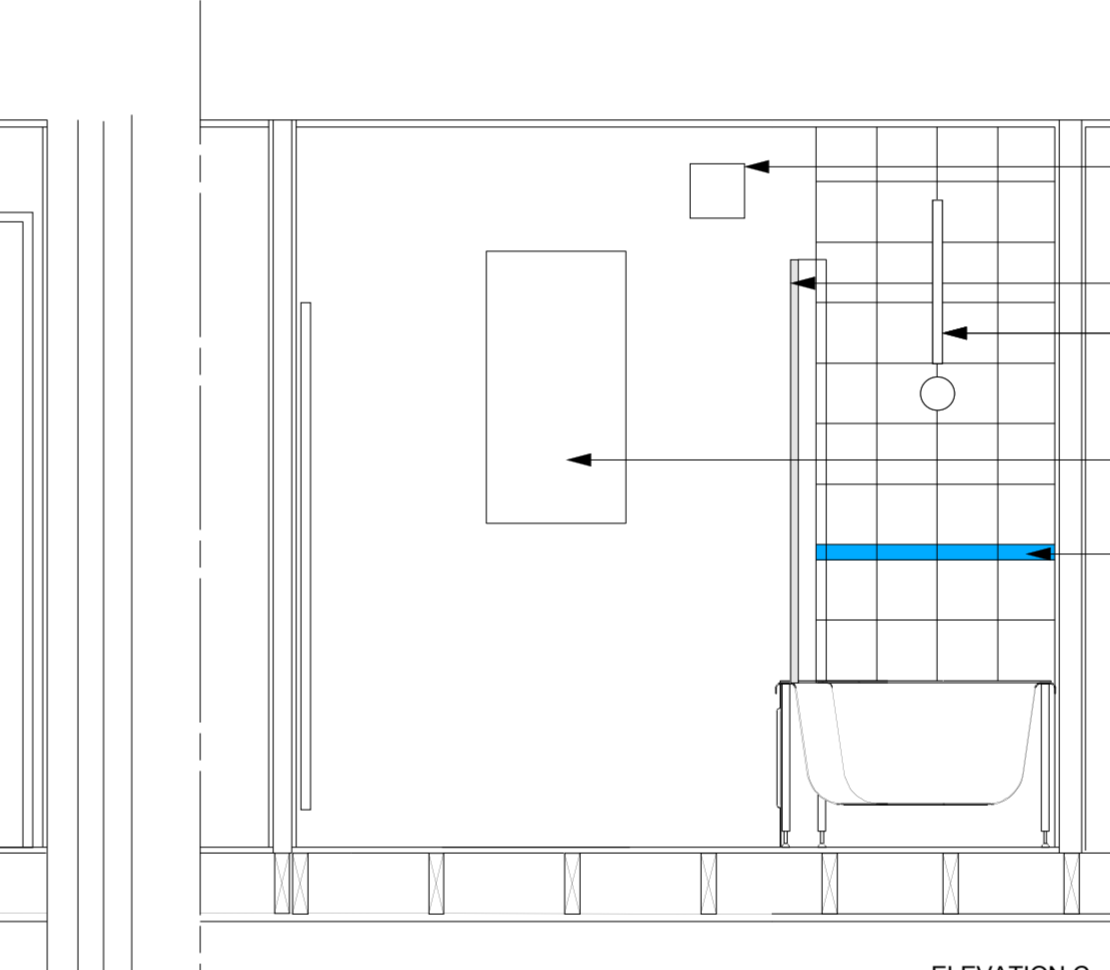
FIRST FLOOR MAIN BATHROOM



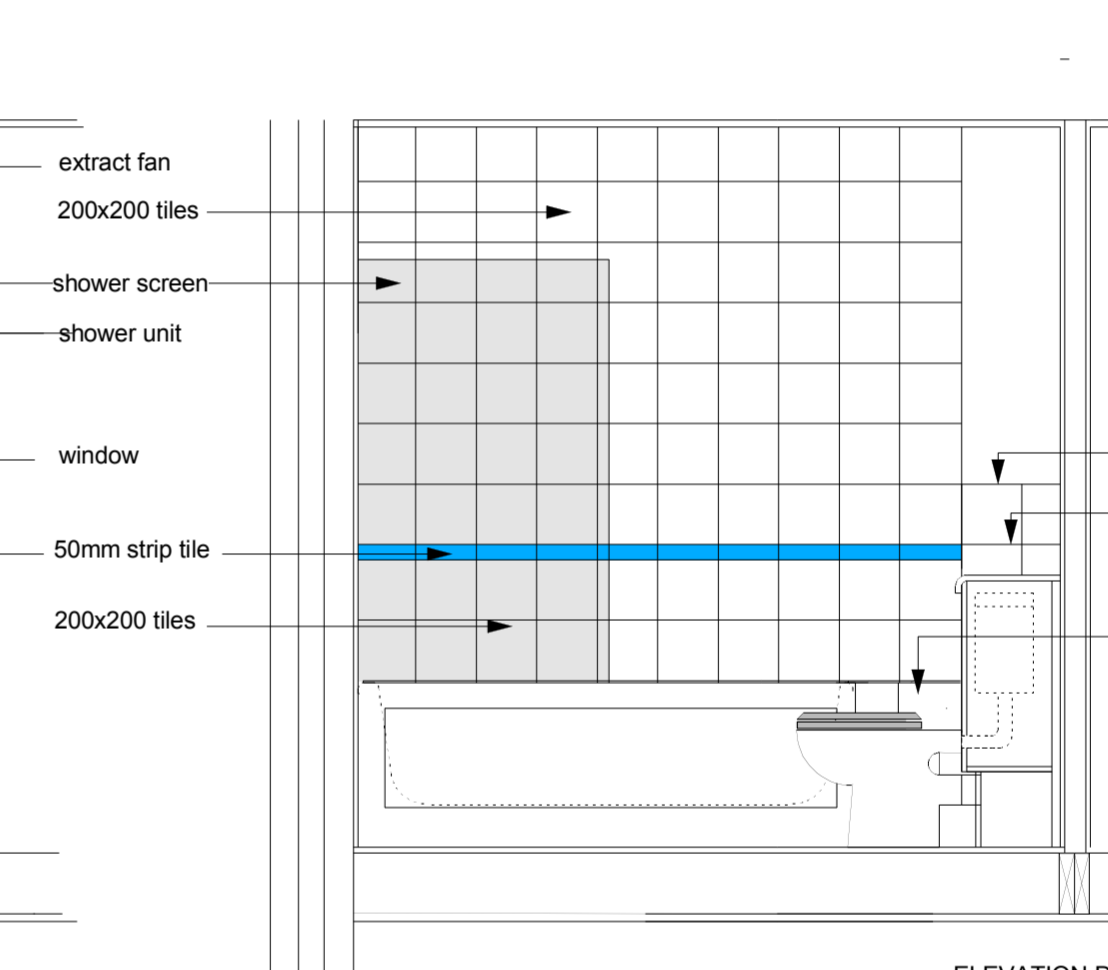
ELEVATION A



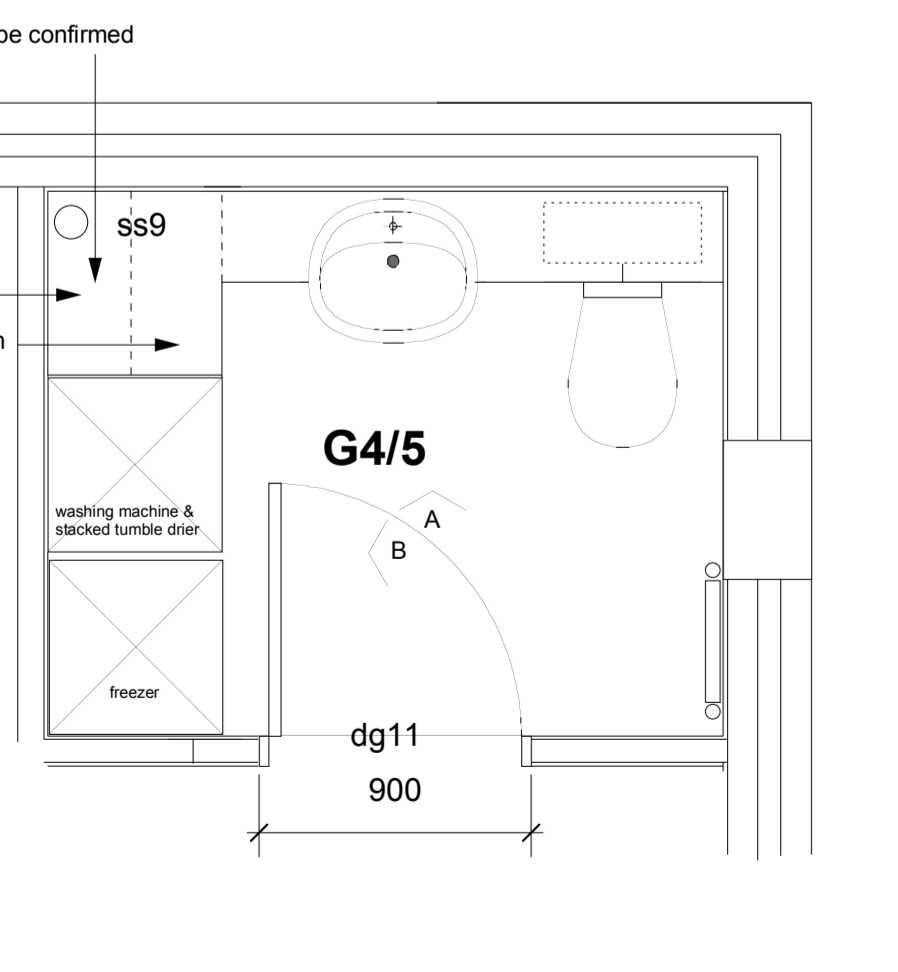
ELEVATION B



ELEVATION C

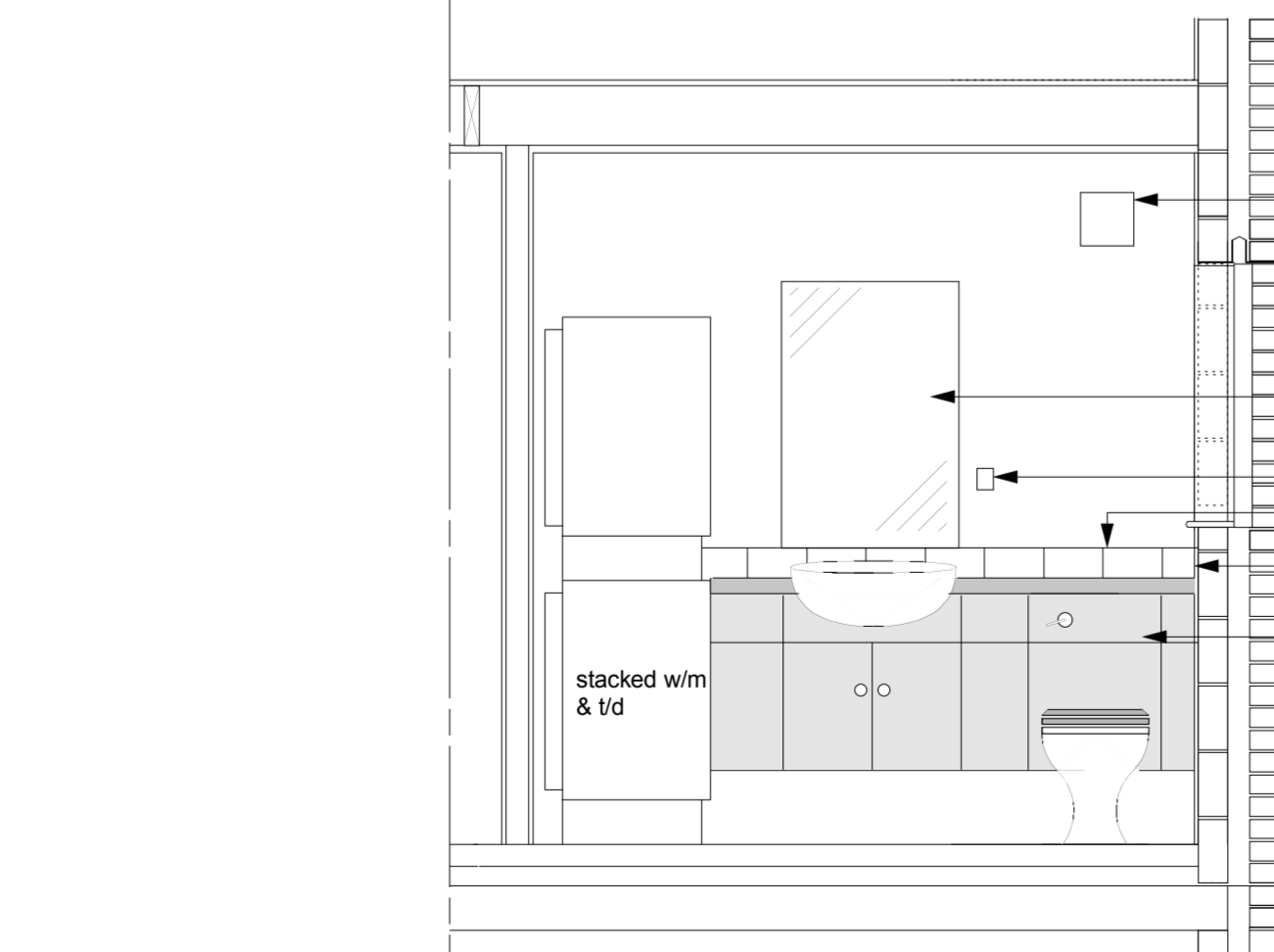


ELEVATION D

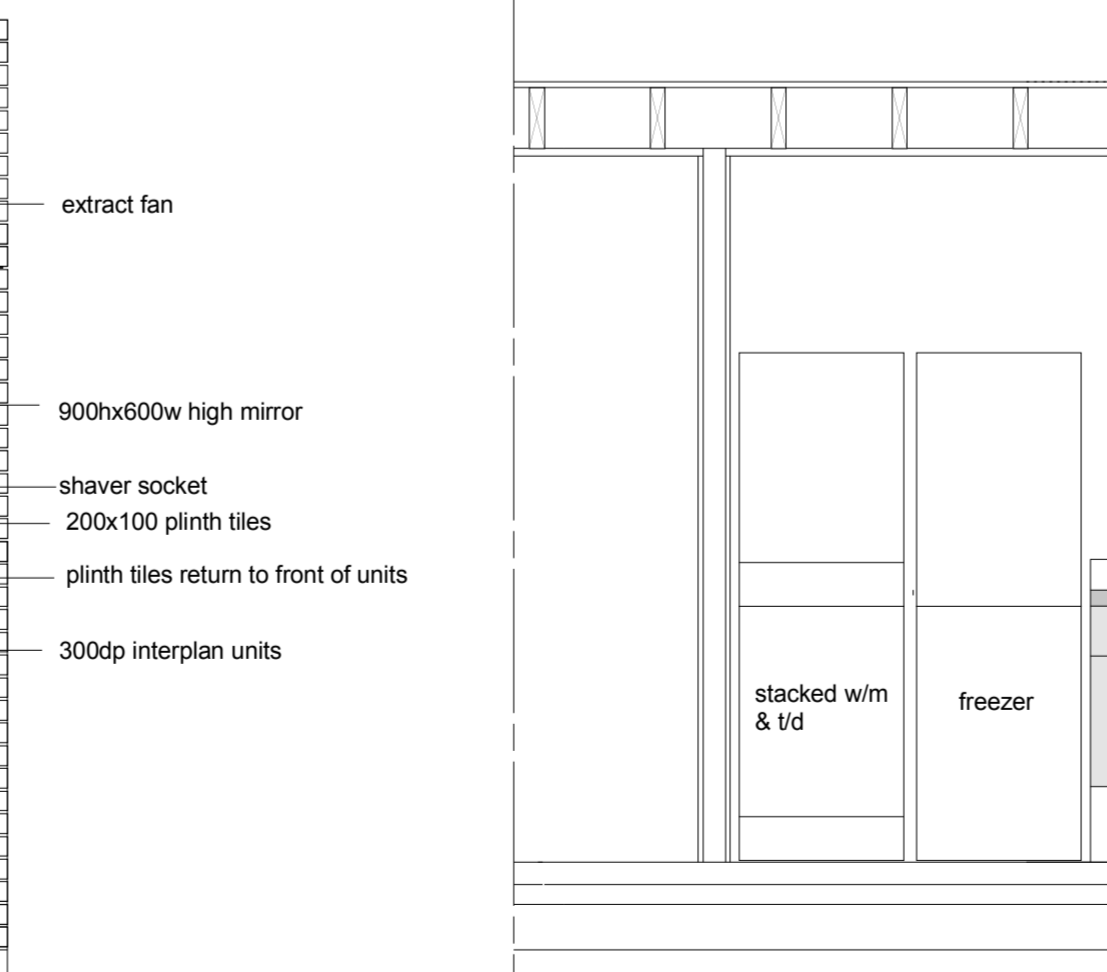


PLAN

GROUND FLOOR WC/UTILITY ROOM



ELEVATION A



ELEVATION B

FOR APPROVAL

**SOUTH BANK ARCHITECTS**  
 28A LOWER MARSH LONDON SE1 7RG  
 tel: 020 7928 6144 fax: 020 7620 1966  
 email: sbarchitects@btconnect.com

*client*  
**DORIC SECURITIES LTD.**  
 "Riverside", Wandale Trading Estate, Mitcham, Surrey CR4 4HW

*project*  
**WOOD AVENUE, PURFLEET THURROCK, ESSEX**

*title*  
**HOUSE 5: BATHROOMS**

*scale*  
 1:25

*drawing no.*  
**S1729/652.2**

© South Bank Architects 2004