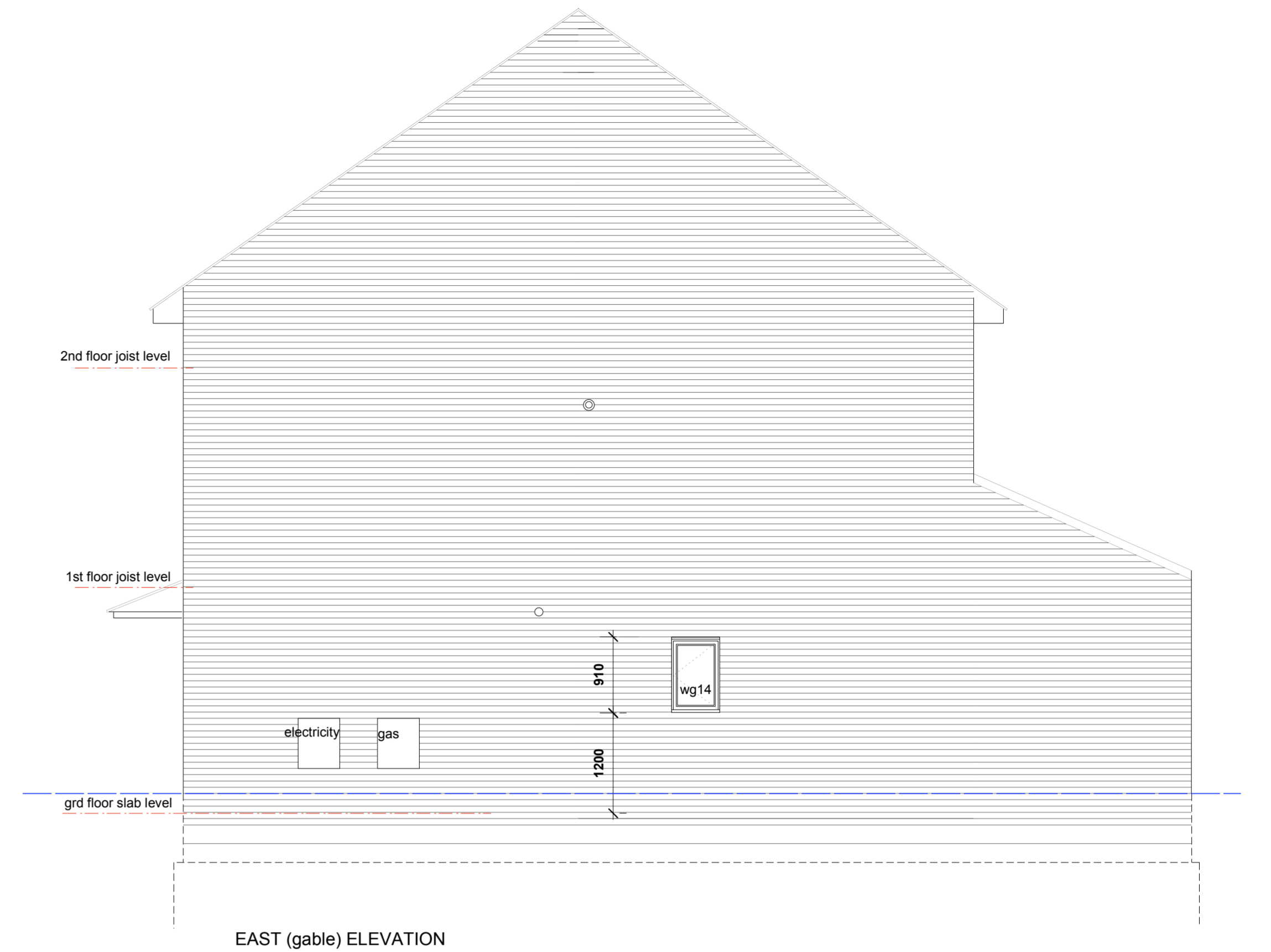


NORTH (garden) ELEVATION

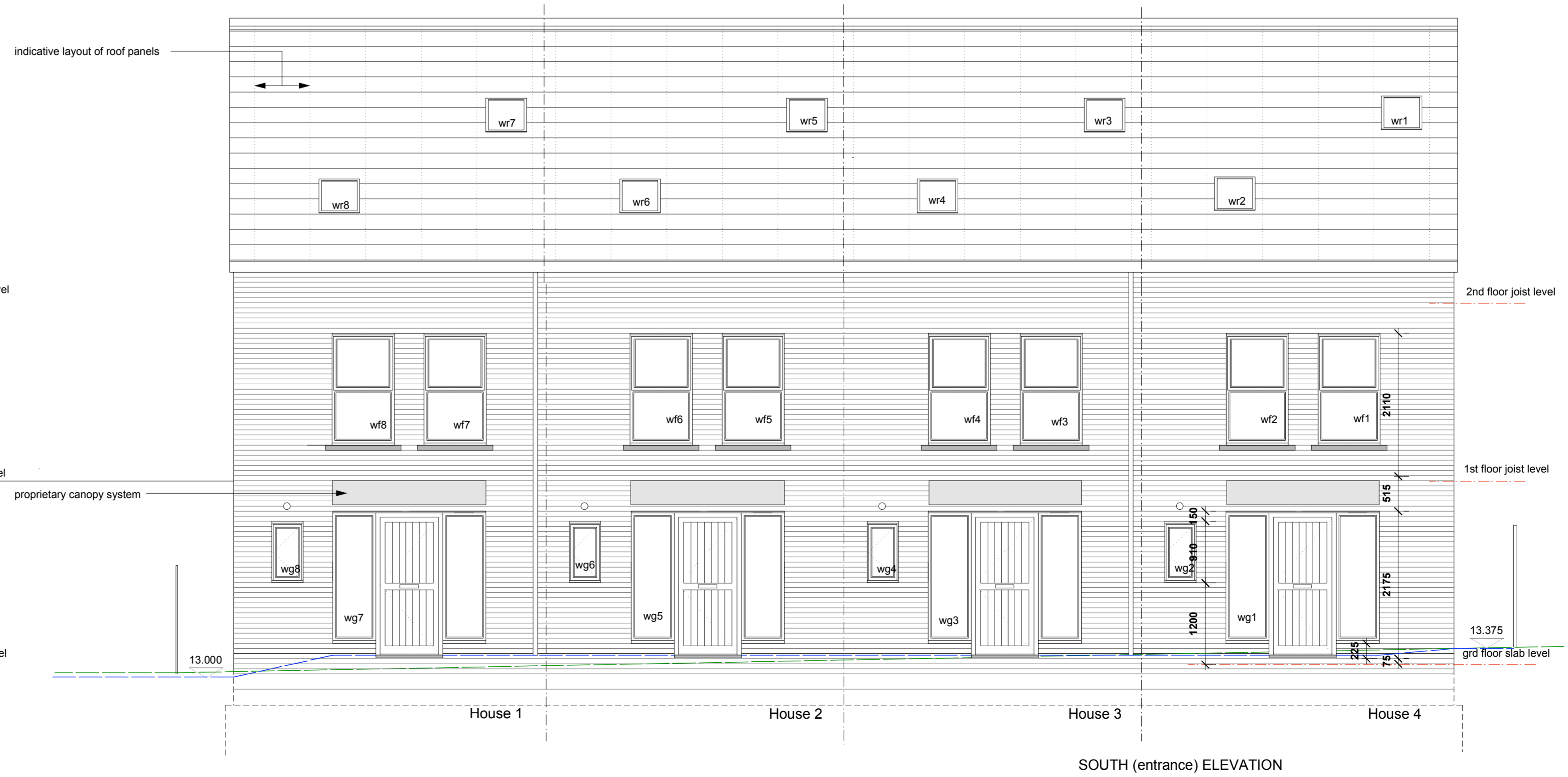


EAST (gable) ELEVATION

— — — — — proposed grd levels  
 — — — — — existing grd levels



WEST (gable) ELEVATION



SOUTH (entrance) ELEVATION

Rev E: utility room fan outlets shown  
 Rev D: wg14 moved, conservatory windows amended  
 Rev C: conservatory windows amended  
 Rev B: window types & conservatory roof amended  
 Rev A: rwps & ground levels added

**SOUTH BANK ARCHITECTS**  
 28A LOWER MARSH LONDON SE1 7RG  
 tel: 020 7928 6144 fax: 020 7620 1966  
 email: sbarchitects@btconnect.com

client  
**DORIC SECURITIES LTD.**  
 "Riverside", Wandale Trading Estate, Mitcham, Surrey CR4 4TW

project  
**WOOD AVENUE, PURFLEET THURROCK, ESSEX**

title  
**HOUSES 1 - 4: ELEVATIONS**

scale  
**1:50**

drawing no.  
**S1729/405E**